

QUICK START GUIDE

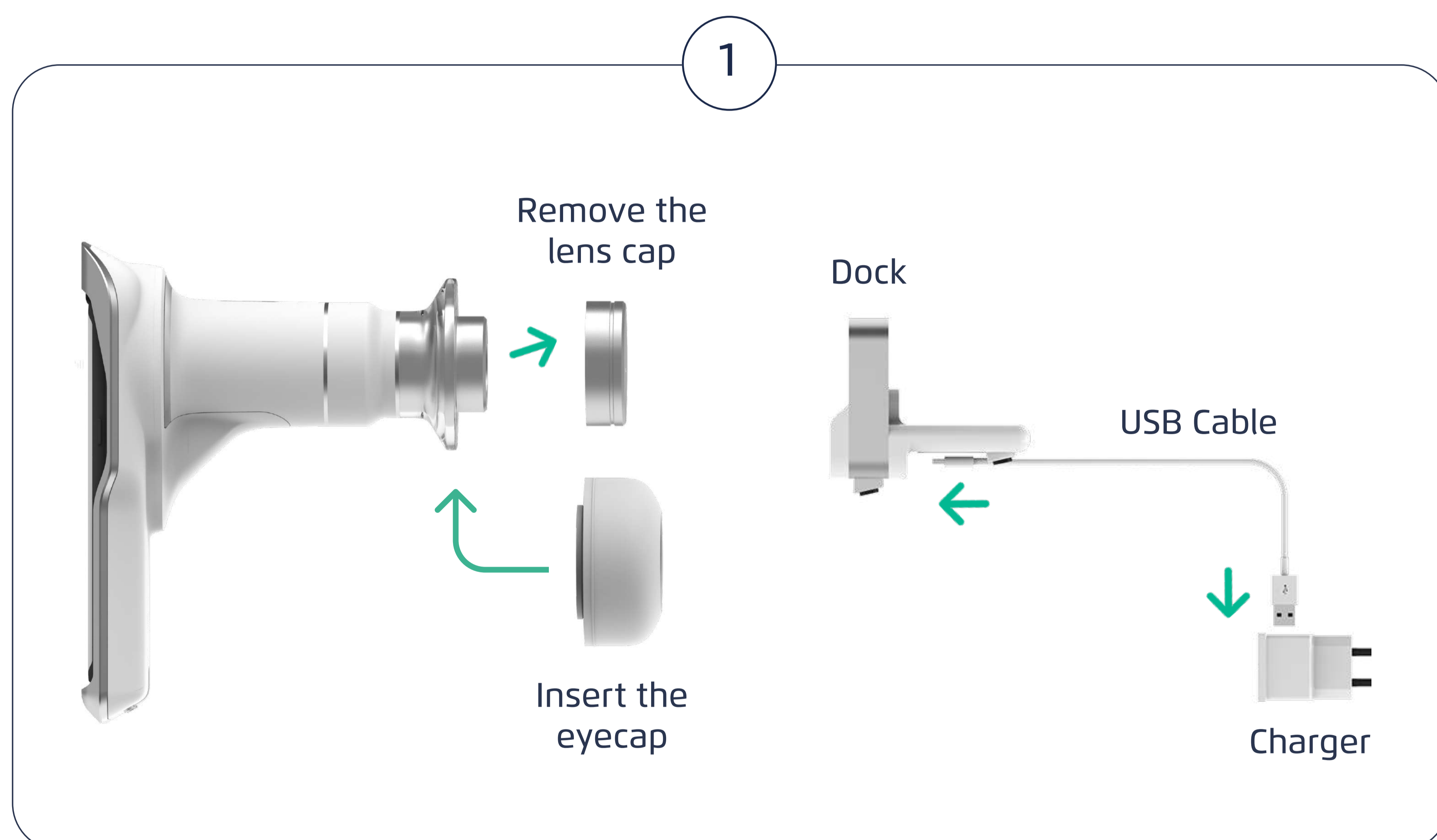
Eyer

Retinal Camera

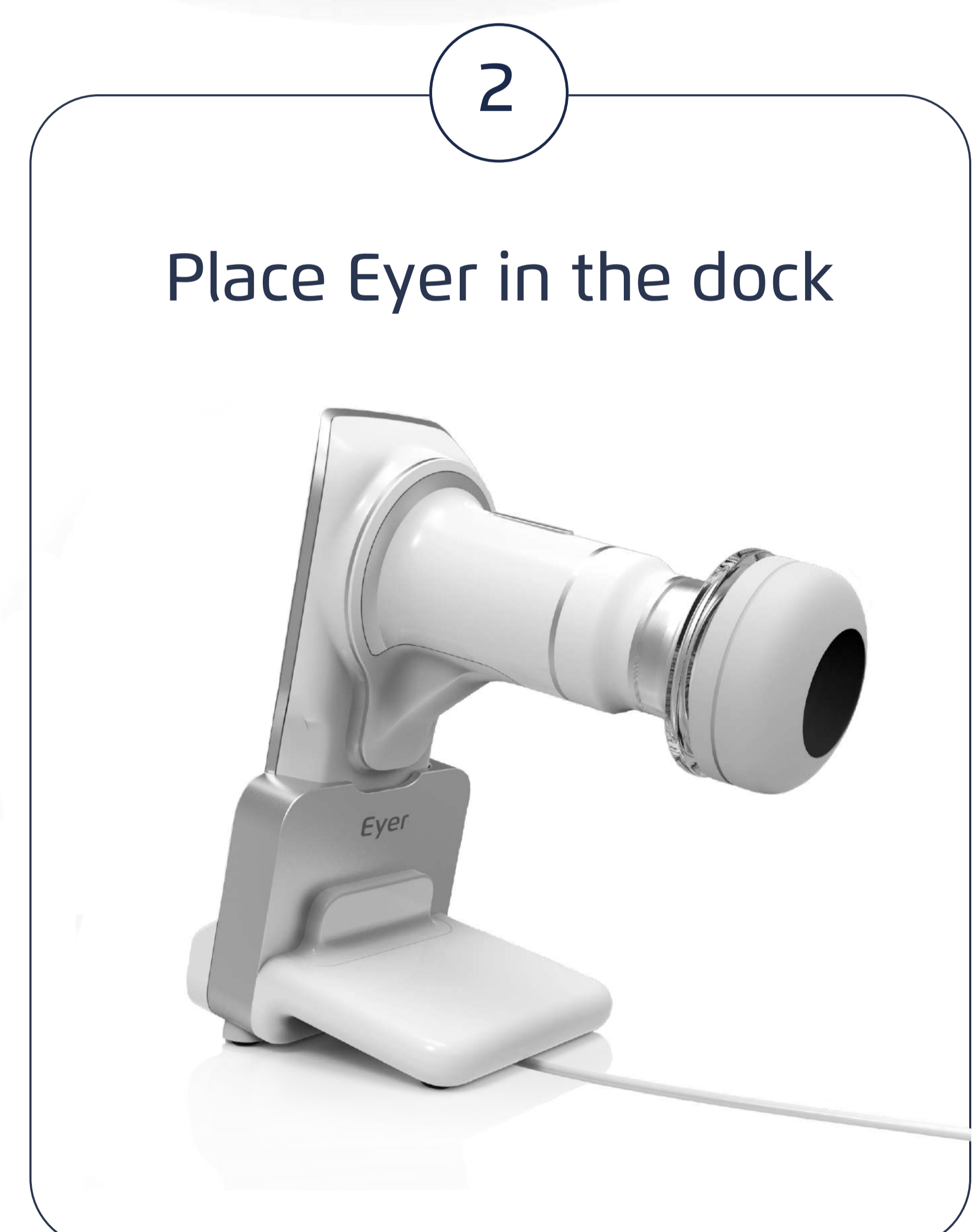


UNPACKING AND CONNECT

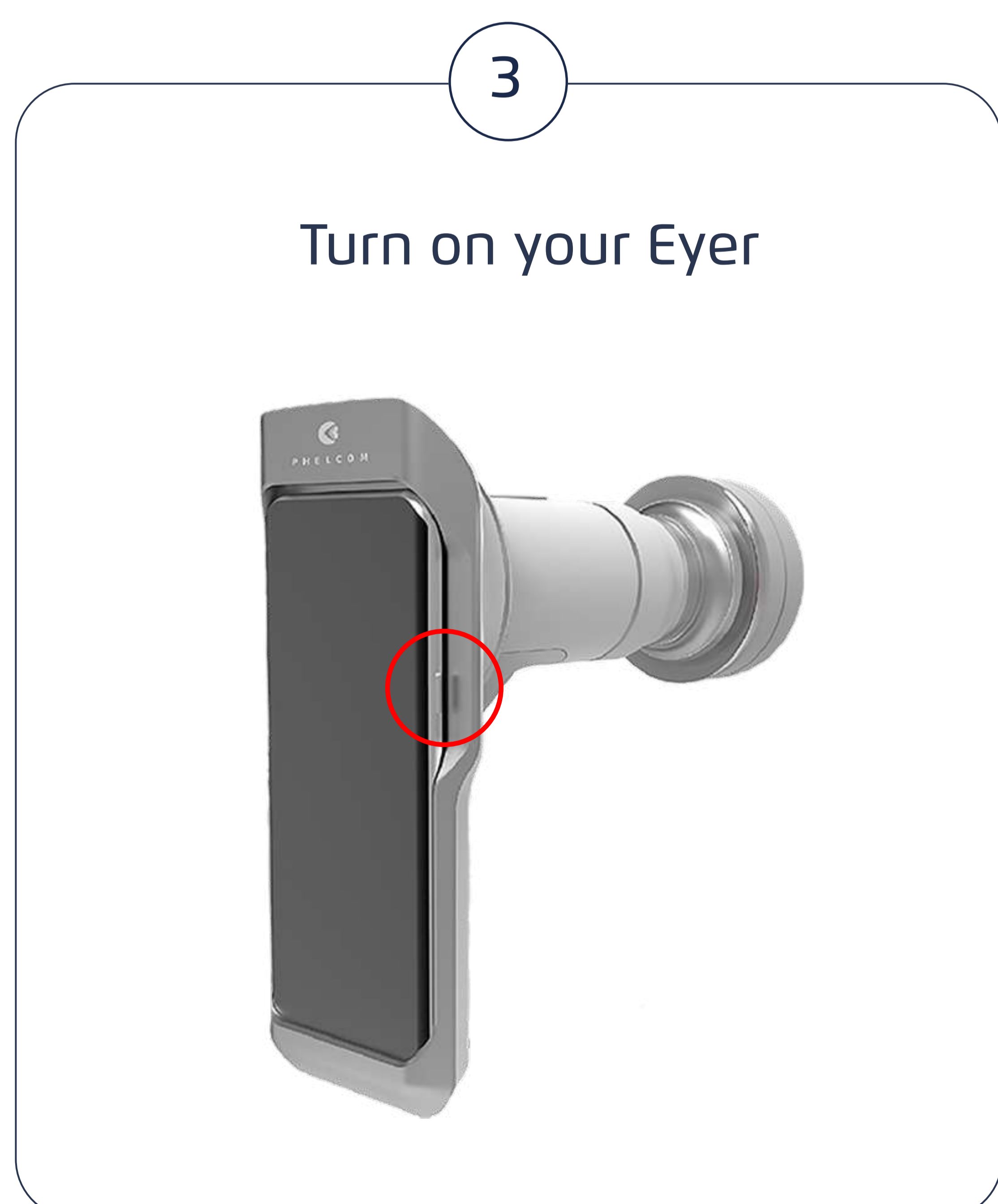
1



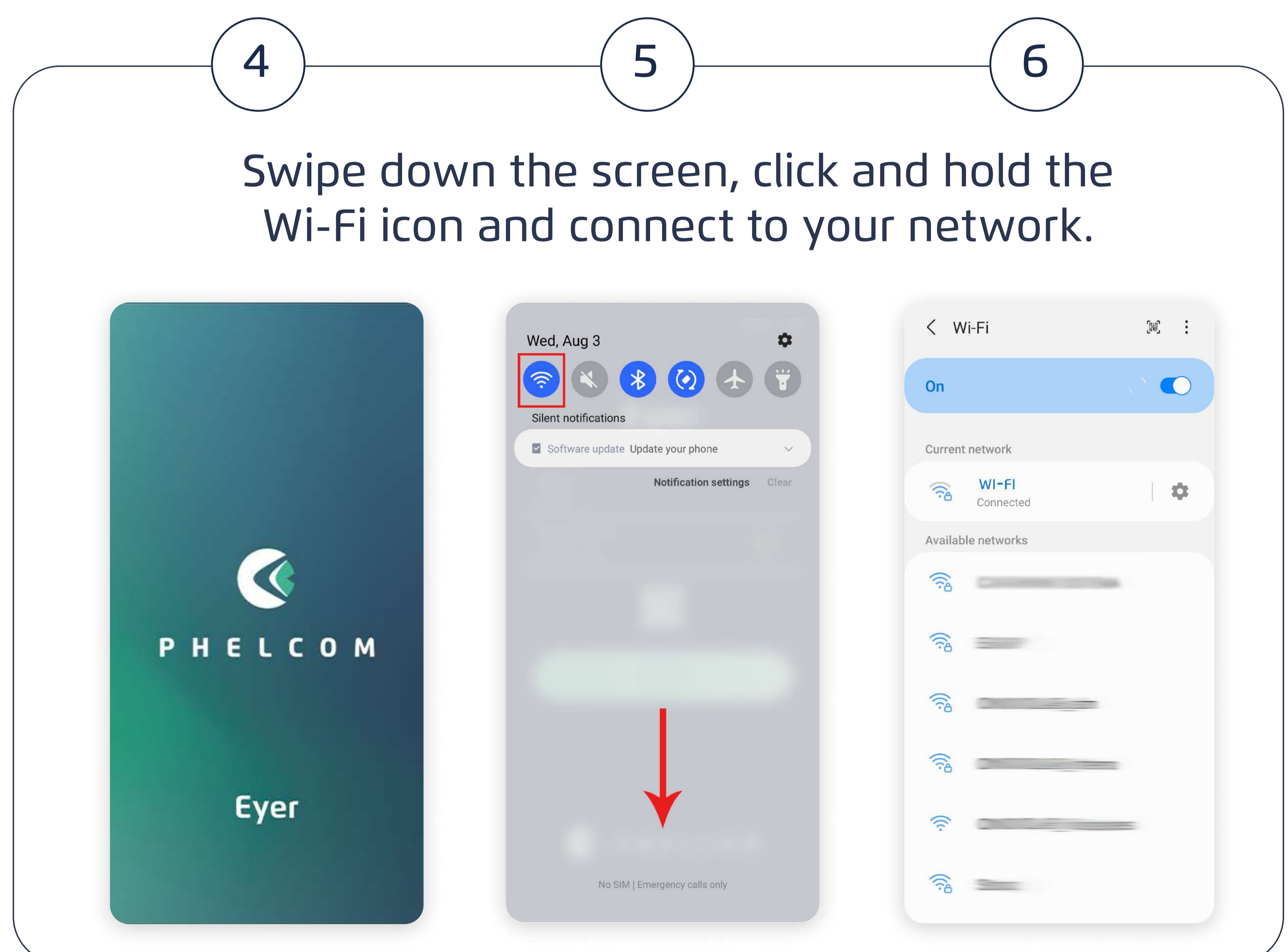
2



3



4



5

6

7 8 9

Access the Eyer application and log in

Welcome to the new era of Vision Care

Let's begin?

LANGUAGE

English (US)
Portugues (Brasil)
Español
Japanese

TERMS AND CONDITIONS

Last update: June 4, 2020.
WARNING – READ CAREFULLY BEFORE ACCESSING OR USING OUR SERVICES
These are Phelcom Technologies ("Phelcom") Terms of Use and Services. Phelcom is the company which owns the website www.phelcom.com.br, the mobile application software Eyer and the management software EyerCloud, through which Phelcom Services can be accessed and/or used by our Users and/or Customers.
These Terms of Use are a contract ("Agreement") between you (our User and/or Customer), and us, Phelcom. Here we describe the Services we offer you and the conditions of use for our Mobiles as well as our Customers.

Terms of Use
Privacy Policy

I confirm that I have read and accept the Terms of Use and Privacy Policy



EYER ACCOUNT CREATION

10 11 12 13 14

Check your e-mail

WATCH THE TUTORIAL

Tutorial First Steps with your Eyer

Read the QR CODE to watch the video on your phone

SIGN IN
CREATE ACCOUNT

USER INFO

Name
Last name
Clinic name
Country

LOGIN INFO

Email
Confirm email
Password
Confirm password
PIN
Confirm PIN

(Provide 8 or more characters with a mix of letters, numbers and symbols)

(Numeric password, will be used to access the device. Provide 4 or more digits)

ACCOUNT VERIFICATION

A verification code was sent to the email your_email@email.com

CONFIRM
RESEND

Check your e-mail

PHELCOM

Eyer Registration - Clinic Eye Care

John, use the code below to finalize your account registration:

5 6 1 4 1 3

Phelcom Technologies, The Village Works - 769 Centre St, office 150, Boston, MA 02130, United States

QUICK CAPTURE

How to hold the Eyer

15 16

Eyer

EMAIL
email
PASSWORD
password
LOGIN
CAPTURE

PHELCOM

CAPTURE


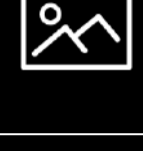



Patient

PRO HDR AUTOSHOT

OD OS

- Autoshot ON/OFF (STANDARD ON)
- HDR ON/OFF (STANDARD OFF)
- Access the PRO Mode to control light, focus and switch to anterior pole captures.
- OD Oculus Dexter (Right Eye)
- OS Oculus Sinister (Left Eye)

17

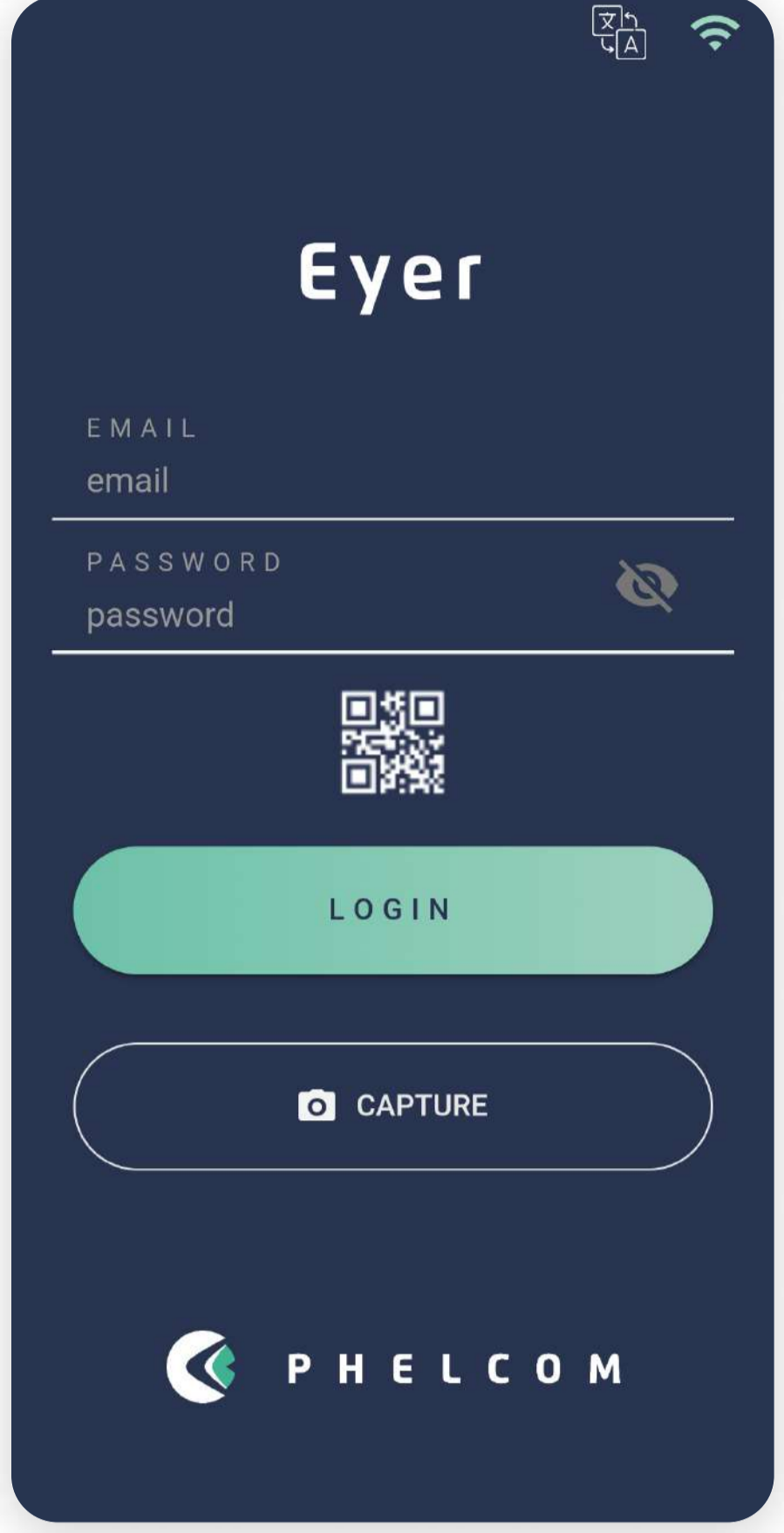
Symbol	Meaning
OD	Oculus Dexter (Right Eye)
OS	Oculus Sinister (Left Eye)
HDR	High Dynamic Range
	Autoshot
	Image Gallery
	Capture (Manual)
	Internal Fixation Targets
	PRO Mode

18

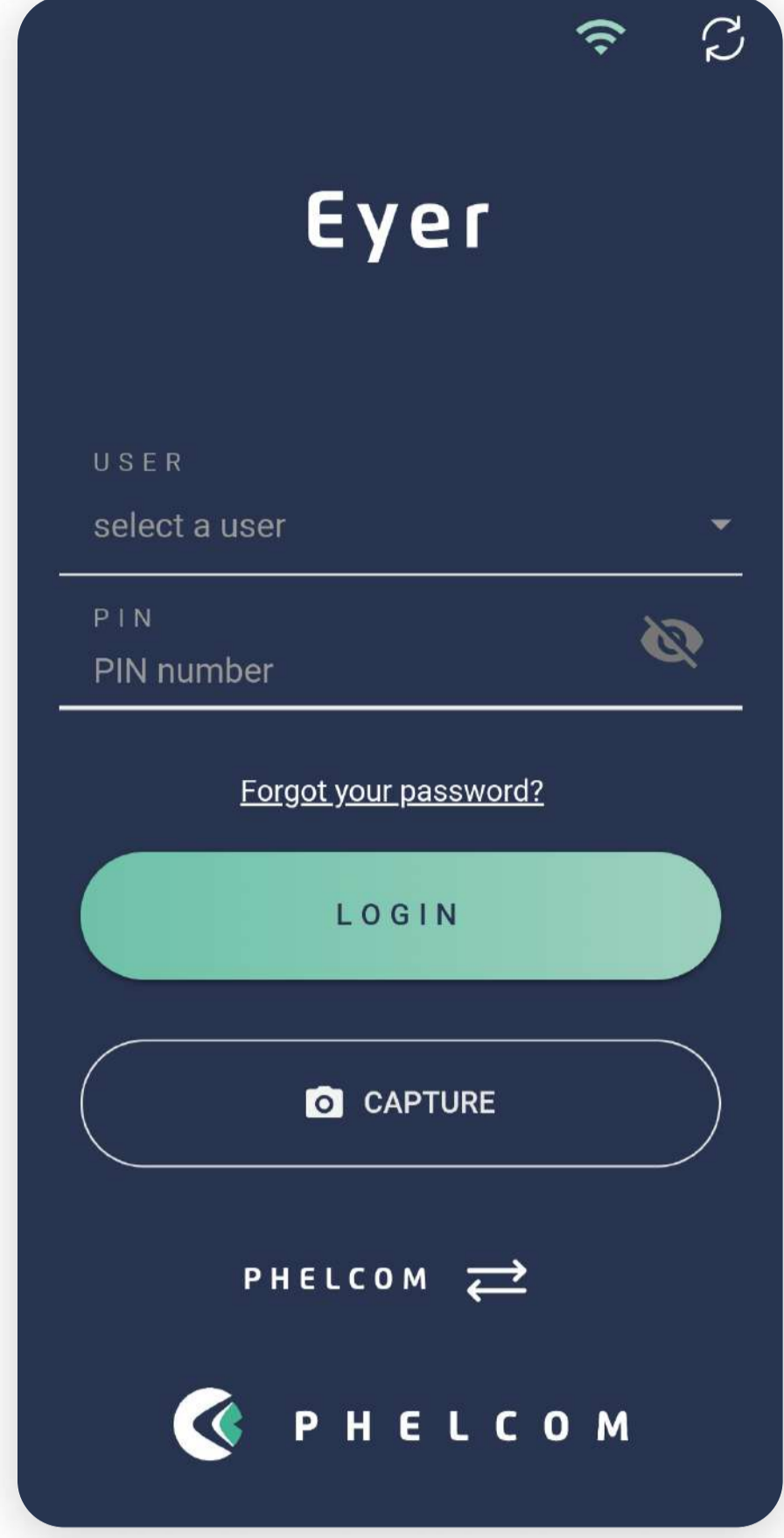
19

Log in your account

Clinic Login



User Login



CREATING PATIENTS

20

21

22

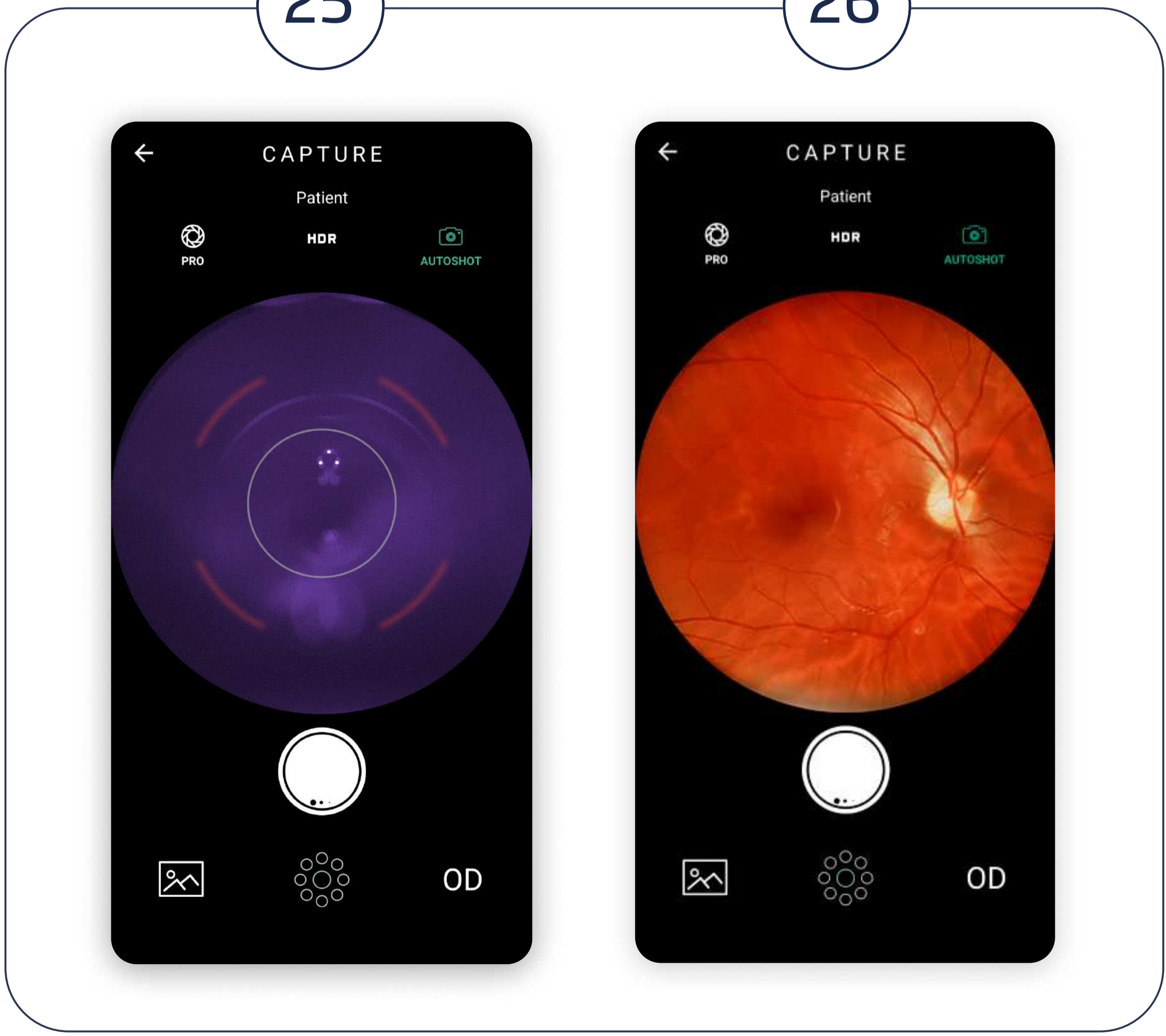
23

24



25

26



Scan the QR Code to access the tutorial




QUICK START GUIDE

phelcom.com | support@phelcom.com

